

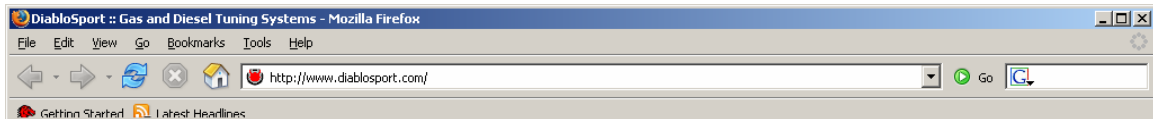
DIABLOSPORT®

GASOLINE AND DIESEL TUNING SYSTEMS

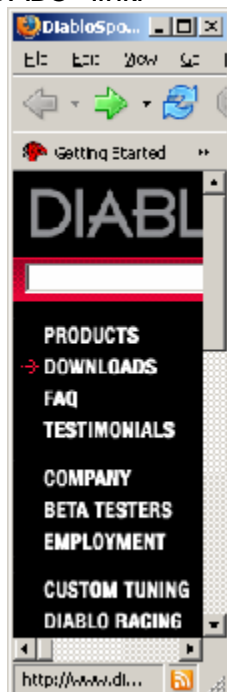
HOW TO IMPORT A VEHICLE BACKUP FROM YOUR '99-'02 PREDATOR

Congratulations on the purchase of your Predator handheld tuner - the leading performance tuner in today's automotive aftermarket! These instructions provide detailed information on how to get an original backup file from your Predator to your PC. In order to retrieve and Original Backup, or custom tuning file from your Predator, you will need the DiabloSport Predator PC Interface Kit (U7777) available for purchase at any authorized DiabloSport dealer!

First connect to the internet and type <http://www.diablosport.com> into the address bar.



This will bring you to the home page of DiabloSport! Once the page has loaded, look to the left and click the "DOWNLOADS" link.



After choosing the correct application, go to the bottom of the page. You will find hyperlinks to the update files and other downloads for your application in **blue**.

The screenshot shows the Diablosport Edition website. At the top, there are navigation links for [Instructions](#), [Downloads](#), and [Documentation](#). Below these is the "Instructions" section, followed by "Diablosport Edition" which states it boots up with the Diablosport logo. The "Download Updates" section notes that current versions do not support remote updates and lists current GM revisions for GM Gas (U7192 rev 2.07, U7195 rev 2.04, U7198 rev 2.11) and GM Diesel (U7180 rev 1.11, U7185 rev 2.02). The "Downloads" section contains a table with columns for vehicle model, last update date, revision, and file name. The "Documentation" section at the bottom lists manuals for GM vehicles from 1999-2000 and 2004-2006.

Model	Last Update	Revision	File
GM 1999 - 2000			
Predator PC Interface	06-09-05	1.00	GM99_02PredatorInterface_108.exe (exe) 1267k
GM 2004 - 2006 (Except LS2)			
Predator PC Interface	06-09-05	1.00	GM03_04PredatorInterface_108.exe (exe) 1277k
GM 2002 LS2			
Predator PC Interface	01-19-06	1.00	GM052InterfaceInstaller.exe (exe) 295k
GM Duramax LLY			
Predator PC Interface	06-09-05	1.00	117_PredatorInterface_109.exe (exe) 1267k

NOTE: There are 4 separate GM PC interfaces! Make sure to download the proper one for your vehicle year, make and model.

Click on the blue hyperlink under "File" and the following box should appear:

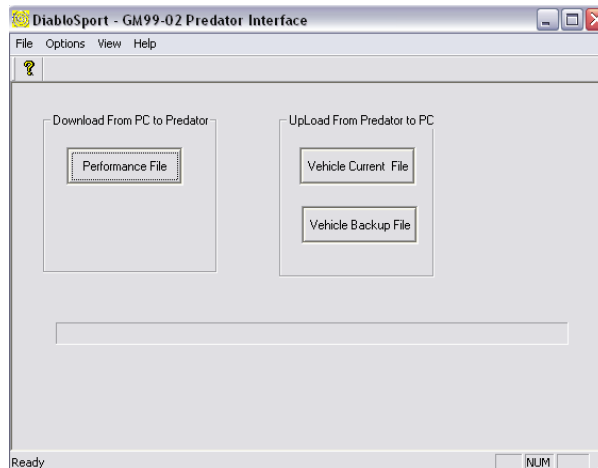


Note: Make sure to put the file somewhere easy to remember such as "Desktop" so you can easily find it later.

Locate the GM PC Interface file that was downloaded to the desktop and install the application. The following screen should appear:



Install the DiabloSport '03 - '06 PC Interface on your PC. Once finished, locate the shortcut icon on your desktop and double click to open it. This should bring up the PC Interface. Follow the prompts through by clicking next. You will need to restart your PC once the installation is complete.



NOTE: The PC Interface should default to COM 1 and the baud rate should be set to 57,600 to load custom tunes. If the PC interface displays a message of "Com Setup Failed," try selecting another COM port 1-6. Also make sure that any USB-to-serial software drivers are already installed on the PC before loading the tune.

NOTE: Make sure that you have installed a tune on your vehicle before you try to export the original backup. The Predator will save this backup when you first install a performance tune on the vehicle! Once you have installed a tune and the Predator has the original backup stored, plug the tip of the 12V 1 AMP DC Power Supply into the top of the Predator, as well as the 9-Pin RS232 Serial Cable from your Predator PC interface kit (U7777).

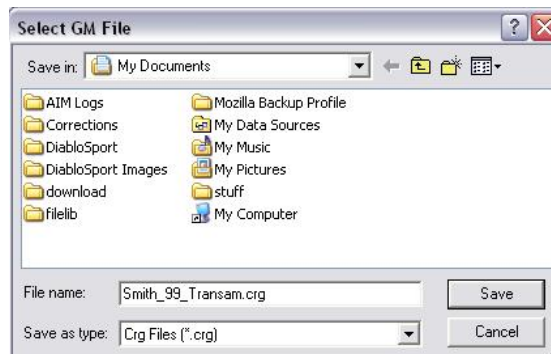
Click on the button labeled "Vehicle Backup File". The following screen will be displayed:



The PC interface will prompt you to now enter a file name - make sure to name the file either the VIN number of your vehicle, or the customer last name, year of vehicle, and type of vehicle.

EX: Smith_99_Transam.crg

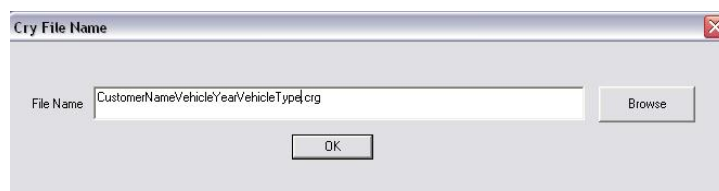
Hit the "Browse" button, and save the tuning file somewhere you will remember. Next, hit the "Save" Button.

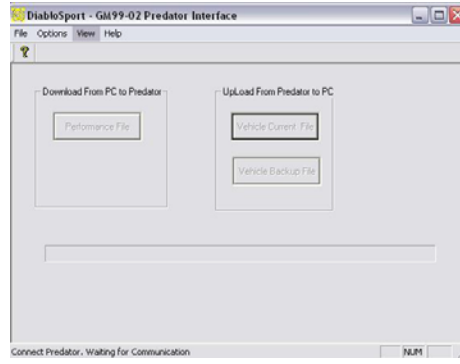


This will bring you back to the "Cry File Name" screen- **BEFORE HITTING OK, GO TO YOUR PREDATOR** and navigate to the following menus using the arrow keys:

1. Options
2. PC Communication
3. Hit the "Enter Key"

Now go back to your PC, and hit the "OK" button.





Once the status bar has reached 100%, you have successfully saved a copy of your vehicle backup!