

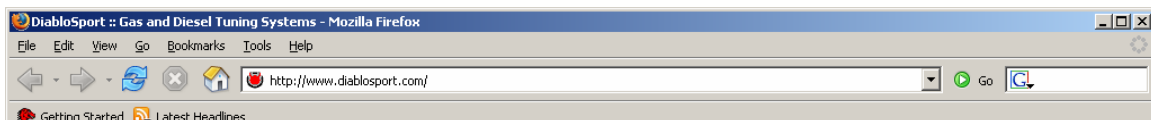
DIABLOSPORT®

GASOLINE AND DIESEL TUNING SYSTEMS

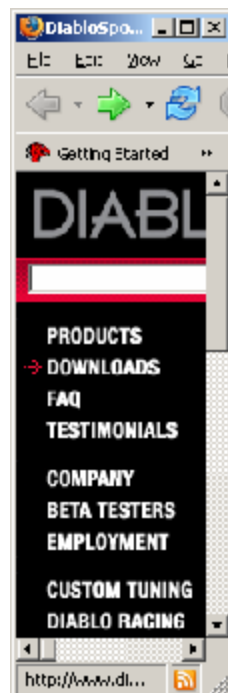
HOW TO SEND A CUSTOM TUNE TO YOUR PREDATOR

Congratulations on the purchase of your Predator handheld tuner - the leading performance tuner in today's automotive aftermarket! These instructions provide detailed information on how to get custom tunes to your GM Predator! In order to export a custom tuning file from your Predator, you will need the DiabloSport Predator PC Interface Kit (U7777) available for purchase at any authorized DiabloSport dealer!

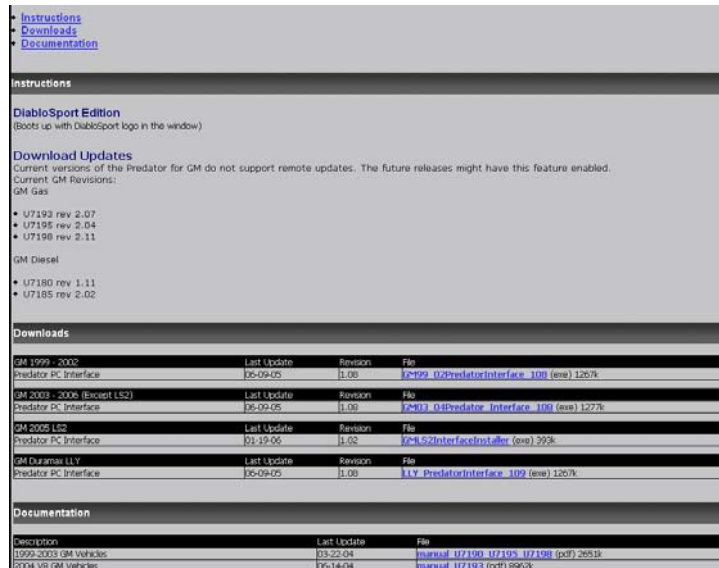
First connect to the internet and type <http://www.diablosport.com> into the address bar.



This will bring you to the home page of DiabloSport! Once the page has loaded, look to the left and click the "DOWNLOADS" link.



After choosing the correct application, go to the bottom of the page. You will find hyperlinks to the update files and other downloads for your application in blue.



NOTE: There are 4 separate GM PC interfaces! Make sure to download the proper one for your vehicle year, make, and model.

Click on the blue hyperlink under "File" and the following box should appear:

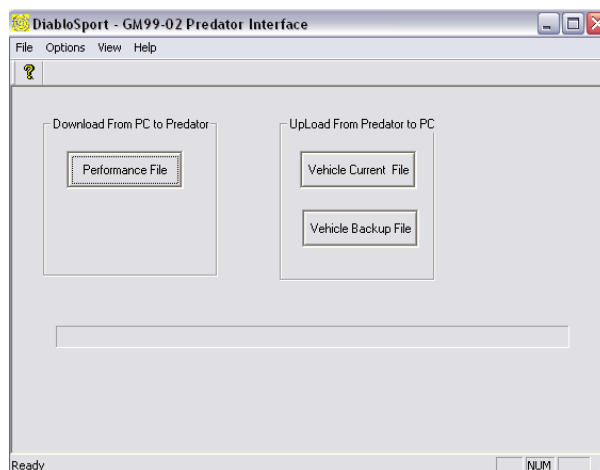


Note: Make sure to put the file somewhere easy to remember such as "Desktop" so you can easily find it later.

Locate the GM PC Interface file that was downloaded to the desktop and install the application. The following screen should appear:



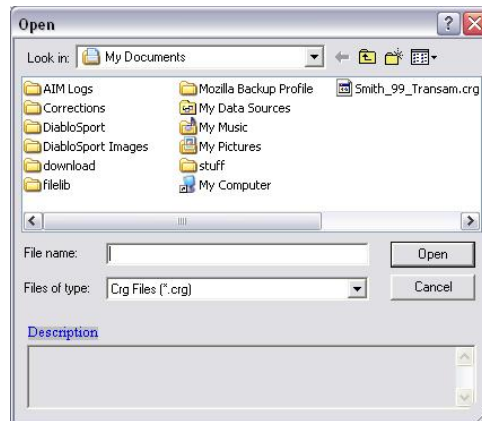
Install the DiabloSport '03 - '06 PC Interface on your PC. Once finished, locate the shortcut icon on your desktop and double click to open it. This should bring up the PC Interface. Follow the prompts through by clicking next. You will need to restart your PC once the installation is complete.



NOTE: The PC Interface should default to COM 1 and the baud rate should be set to 57,600 to load custom tunes. If the PC interface displays a message of "Com Setup Failed," try selecting another COM port 1-6. Also make sure that any USB-to-serial software drivers are already installed on the PC before loading the tune.

NOTE: Make sure that you have installed a tune on your vehicle before you try to export the original backup. The Predator will save this backup when you first install a performance tune on the vehicle! Once you have installed a tune and the Predator has the original backup stored, plug the tip of the 12V 1 AMP DC Power Supply into the top of the Predator, as well as the 9-Pin RS232 Serial Cable from your Predator PC interface kit (U7777).

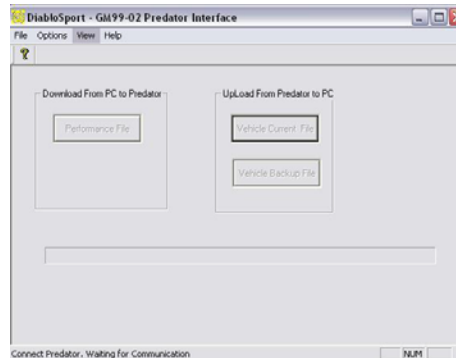
The PC interface will prompt you to enter the name of your tune, or browse for your tune file.



BEFORE HITTING "OPEN", GO TO YOUR PREDATOR and navigate to the following menus using the arrow keys:

1. Options
2. PC Communication
3. Hit the "Enter Key"

Now go back to your PC, and hit the "OK" button.



Once the status bar has reached 100%, you have successfully loaded a custom tune to your Predator. Now, when you plug your Predator in to the vehicle's OBD II port, it will read "Custom Tune" rather than "Tune It"